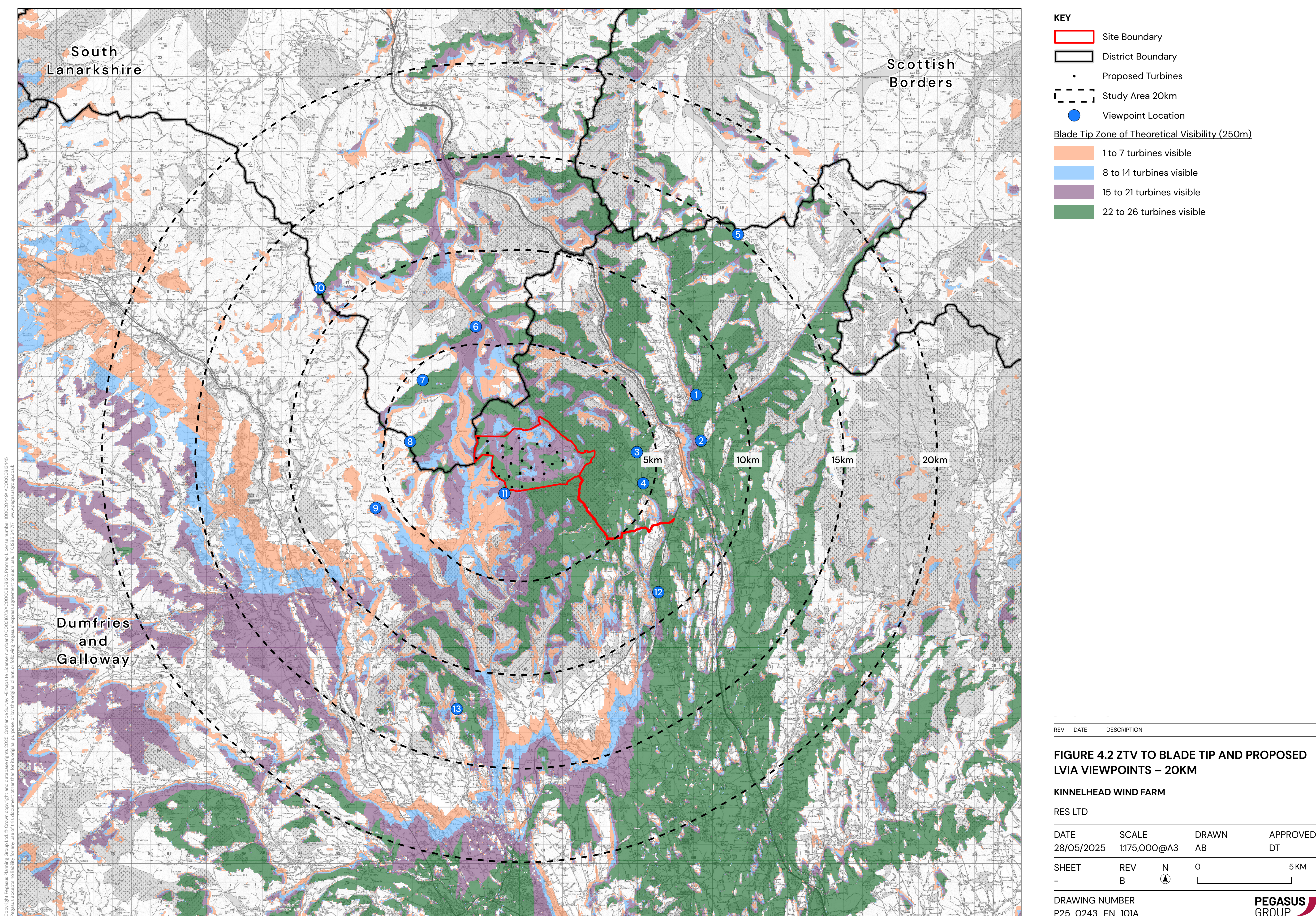


Tip height Zone of Theoretical Visibility (ZTV) – 20km



Bare landform visibility

The Zone of Theoretical Visibility (ZTV) map above illustrates the theoretical extent of where turbines will be visible from within the wider area, assuming 100% visibility and bare landform (no trees, buildings or obstacles in the view) as per NatureScot guidance. This map serves as a tool to inform the Landscape and Visual Impact Assessment (LVIA).

Landscape and visual considerations, including effects on residential visual amenity from the closest properties, will be carefully assessed and play a key role in the progression of the design.

Landscape and visual considerations

As upright structures, turbines cause indisputable changes to the landscape within which they sit and assessing whether this impact is ‘acceptable’ can be challenging. Public opinion on turbine visibility differs, with some people not liking the sight of wind farms in their community and others welcoming them. The visibility indicated on the bare landform ZTV above will be much less extensive in reality. Ultimately, the final decision regarding whether a wind farm’s visibility is acceptable or not rests with the determining authority who will assess applications against planning policy.

Kinmelhead Wind Farm Proposal
kinmelhead-windfarm.co.uk

