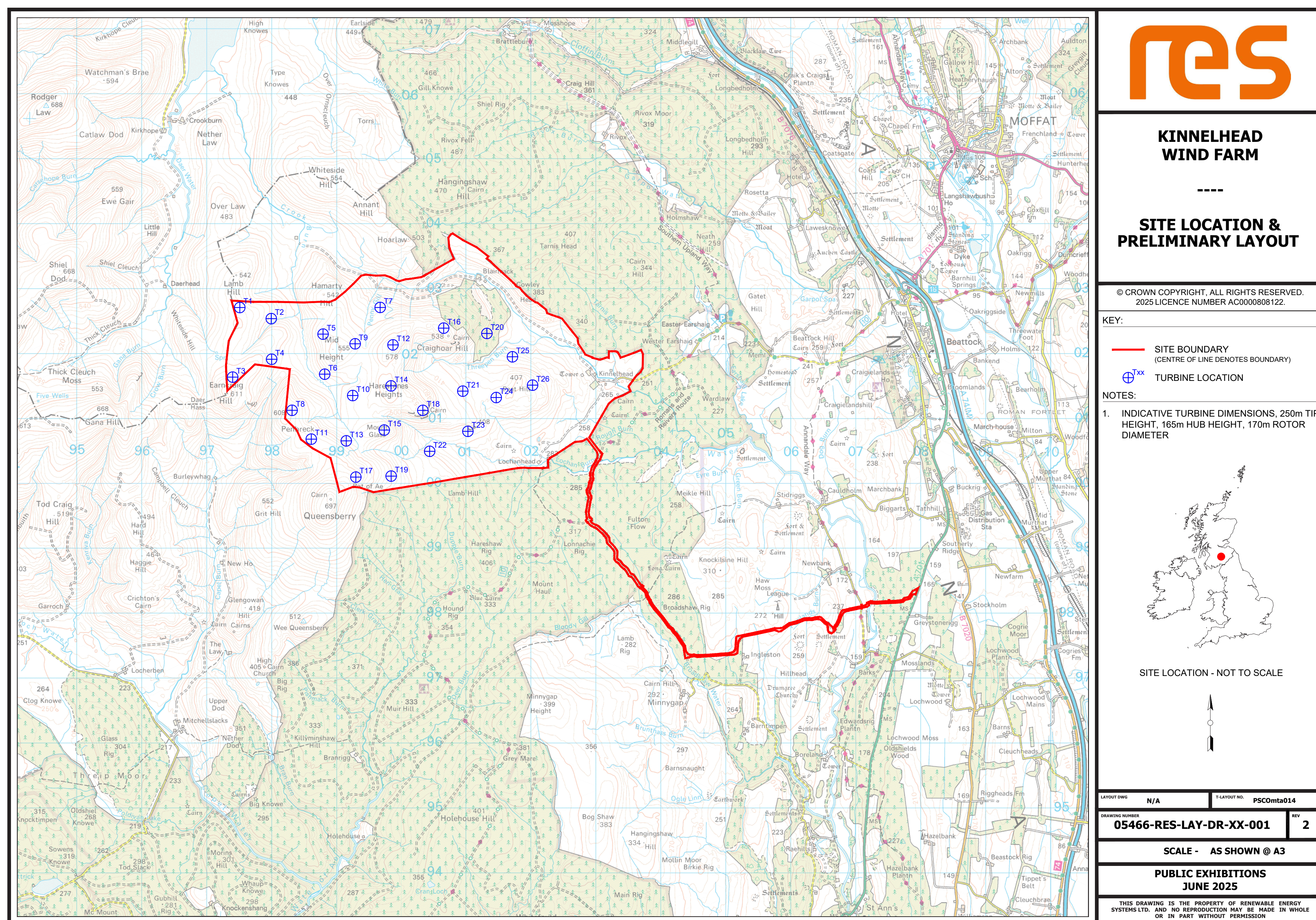


Project overview



Subject to change as design evolves.

The site

The proposed Kinmelhead Wind Farm is located approximately 6km southwest of Moffat.

The site was chosen because it presented good potential for a wind farm with high wind resource. There is an established access route to site and much of it is also identified in the Dumfries and Galloway Local Development Plan 2 (2019) as being an area with potential for wind farm development.

Early design

Based on our initial studies, the wind farm would comprise of up to 26 turbines, each with a maximum height of 250m, resulting in an **overall site generating capacity of 171MW**. Turbine technology has advanced considerably in recent years, meaning that turbines are now taller and more efficient which enables them to generate a significantly greater amount of electricity per turbine. If consented, Kinmelhead would be capable of generating clean, low-cost renewable electricity for around **225,000¹ homes each year**. A battery storage facility is

also proposed with a power output of around 100MW to help increase the flexibility and generation opportunities of the site.

Determining authority

In May, we submitted a Scoping Report to the Scottish Government's Energy Consents Unit (ECU) which sets out and seeks feedback on the proposed scope of environmental assessment work. All consultee feedback to the Scoping Report will be reviewed and any necessary changes made to the proposed scope of environmental and technical work.

The Kinmelhead Wind Farm proposal will have an installed generating capacity greater than 50MW. As such, the application for planning consent will be submitted by RES to the Scottish Government's ECU under Section 36 of the Electricity Act 1989 (the Electricity Act) and determined by Scottish Ministers. Dumfries and Galloway Council will be a statutory consultee in the process. We currently expect to submit the Section 36 application around mid-2026

¹ Calculated by taking the predicted annual electricity generation of the site (based on RES assessments Kinmelhead has a predicted capacity factor of 48.7%) and dividing this by the annual average electricity figures from DESNZ (Department for Energy Security and Net Zero) that the annual UK average domestic household consumption is 3,239 kWh (Jan 2024)

Kinmelhead Wind Farm Proposal

kinmelhead-windfarm.co.uk

res
power for good